

Item No.: \_\_\_\_\_

Project: \_\_\_\_\_

Quantity: \_\_\_\_\_

**Roll-In Proofer — Pass Through, Four Door, 102.5" Wide**

**Series LRP3-30P to -120P**



LRP3-40P (rack not included)



**Short Bid Specification:**

Proofer shall be an **LBC Bakery Equipment Model LRP3-\_\_P** (insert 30, 40, 50, 60, 70, 80, 90, 100, 110 or 120 to indicate desired depth). Appliance shall be electrically heated with four doors, a quick response air-wash heat and humidity system and modular foam-insulated panel construction. Interior shall be 300 series stainless steel with perimeter bumpers to protect doors and walls. Doors shall have magnetic seals, automatic closers and full-width protective bar handles. Computerized control shall be door mounted at eye-level with accurate LED displays for Time, Temperature and Humidity. Complete appliance shall have all features listed and, if selected, optional 300-series stainless steel floor and/or 72610-48 water filtration system.

**Standard Product Warranty:**

One Year Parts and Labor (Contiguous US, Alaska, Hawaii & Canada)

**Rack Capacity:**

Model	Side Load	End Load	Double
LRP3-30P	3	4	N/A
LRP3-40P	3	4	3
LRP3-50P	6	4	3
LRP3-60P	9	8	3
LRP3-70P	9	8	3
LRP3-80P	12	8	6
LRP3-90P	12	12	6
LRP3-100P	15	12	6
LRP3-110P	15	16	6
LRP3-120P	18	16	9

**Construction Features:**

- Heavy-duty stainless steel exterior with 300 series stainless steel interior and aluminized steel top
- Foam-insulated walls, ceiling and doors
- Modular wall and ceiling panels with cam interlocks
- Tubular heaters; non-submerged to extend life
- Lighted interior
- Inner bumpers to protect interior walls and doors
- 208/240VAC 1- or 3-phase power, field convertible

**Performance Features:**

- Rapid responding air-wash heat and humidity system
- Proofing Heat Range: 70-120 deg F
- Humidity Range: 50-99%
- PID-type controller design to ensure rapid and accurate response without overshoot

**Control Features:**

- Control is mounted in the door at eye-level
- Large LED displays for Time, Temperature, and Humidity
- Five unique timers to manage multiple products simultaneously

**Options and Accessories:**

- Rugged 300-series stainless steel floor
- 72610-48 Water Filtration System

**Roll-In Proofer — Pass Through, Four Door, 102.5" Wide**

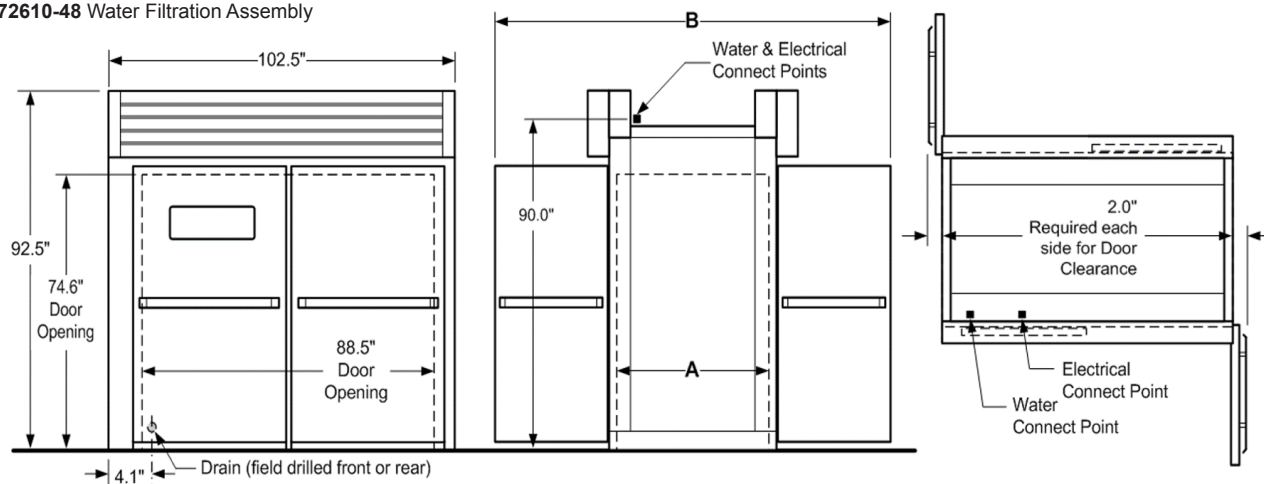
**Series LRP3-30P to -120P**

**Installation Requirements:**

- Factory authorized start-up required
- Ships knocked down. Requires on-site assembly
- Appliance may require external support
- Appliance is designed to operate at normal room temperatures
- Clearance to combustibles is 0" along sides
- Floor must be level to within 1/8" per foot. Difference for entire floor must not exceed 3/4"
- For installation on non-porous surfaces only

**Options and Accessories:**

- Stainless Steel Floor
- 72610-48 Water Filtration Assembly



**Dimensions:**

Model	Dim A (in)	Dim B (in)
LRP3-30P	28.8	126.6
LRP3-40P	38.9	136.6
LRP3-50P	48.9	146.6
LRP3-60P	58.9	156.6
LRP3-70P	68.9	166.6
LRP3-80P	79.0	176.7
LRP3-90P	89.0	186.7
LRP3-100P	99.0	196.7
LRP3-110P	109.1	206.8
LRP3-120P	119.1	216.8

**Shipping Information:**

Weight (lbs)		Freight Class
Actual	Shipping	
919	2051	85
1009	2161	
1017	2301	
1107	2411	
1198	2521	
1205	2661	
1351	2948	
1441	3058	
1449	3198	
1539	3308	

**Minimum Water Quality Requirements:**

Alkalinity < 22 ppm	Magnesium < 0.65 ppm
Aluminum < 17 ppm	pH = 8.5
Calcium < 3 ppm	Sodium < 8.5 ppm
Free Chlorine Radical < 0.6 ppm	Total Hardness < 11.9 ppm

**Utility Requirements:**

Model	Voltage	Total kW	MCA		MOP		Water	Drain
			1 Phase	3 Phase	1 Phase	3 Phase		
LRP3-(30P to 80P)	208	5.0	30	20	50	50	1/2" NPT, cold, filtered	3/4" copper, Route to air gap drain
	240	6.6	35	20	50	50		
LRP3-(90P to 120P)	208	10.2	N/A	35	N/A	60		
	240	13.2	N/A	40	N/A	60		