

Item No.: _____

Project: _____

Quantity: _____

Electric "Mini" Rotating Rack Oven with Stand

Model LMO-E-S



LMO-E (shown with 8-pan rack and 29" Stand)



Short Bid Specification:

Oven shall be an **LBC Mini Rotating Rack Electric Oven with Stand, model number LMO-EX-Y-Z** (for X, enter 6, 8 or 10 for Rack Choice; for Y, enter 208, 240 or 480 for Voltage Choice; for Z, enter S15, S19, or S for Stand Choice). Oven shall have an internal steam system consisting of 150 lbs of thermal mass and a stainless steel water drop system to dispense water to the mass. The oven shall be electrically heated with tubular heaters.

Standard Product Warranty:

One Year Parts and Labor (Contiguous US, Alaska, Hawaii & Canada)

Rack Capacities:

Usage	LMO-E6 (6-Pan Rack)	LMO-E8 (8-Pan Rack)	LMO-E10 (10-Pan Rack)
18" x 26" Sheet Pans	6	8	10
18" x 13" 1/2-Size Pans	12	16	20
3-Strap Pan Bread	12	N/A	N/A
Baguettes, 8 oz	30	40	N/A
Cookies, 2 oz	12 dozen	16 dozen	20 dozen

Construction Features:

- Stainless steel interior and exterior
- Heavy-duty swivel casters; front pair locking
- Low pressure water injection steam system with 150 lbs of thermal mass for maximum steam
- Double doors open simultaneously and latch to prevent accidental opening during operation
- Inner glass panes hinged for easy cleaning
- Full perimeter silicone door seal

Performance Features:

- 1 gallon of water per 20 sec steam cycle
- Programmable vent
- Safety limited torque-drive rotation system
- Low noise air circulation system
- Brightly lit interior

Control Features:

- Large easy-to-read LED displays
- Simple manual setting of Set Point, Steam and Time
- Manual one-touch Blower Delay, Pulse Blower and Vent Control
- Storage for up to 40 programmed recipes
- 6 ea Quick Select recipe buttons to access most-used recipes

Options and Accessories:

- Rack Options: **6** (6-Pan, 5-1/2" spacing), **8** (8-Pan, 4" spacing) or **10** (10-Pan, 3-1/4" spacing)
- Voltage Options: 208V, 240V, or 480V
- Stand Options: **S15** (15" high), **S19** (19" high) or **S** (29" high). **S** Stand includes rack slides to accommodate 12 ea 18" x 26" sheet pans. Rack slides are removable without tools for cleaning
- Accessory: Water Connection Kit
- Accessory: Water Filtration Assembly

Electric "Mini" Rotating Rack Oven with Stand

Model LMO-E-S

Installation Requirements:

- Factory authorized start-up required
- Ships in two pieces. Will fit through a 34" opening with some disassembly
- Clearance to combustibles: 0" Sides and Back, 18" Top
- Check local codes to determine if oven requires a hood

Build Model Number with Options:

Rack Choice

- 6 = 6-Pan Rack (5-1/2" spacing)
- 8 = 8-Pan Rack (4" spacing)
- 10 = 10-Pan Rack (3-1/4" spacing)

Voltage Choice

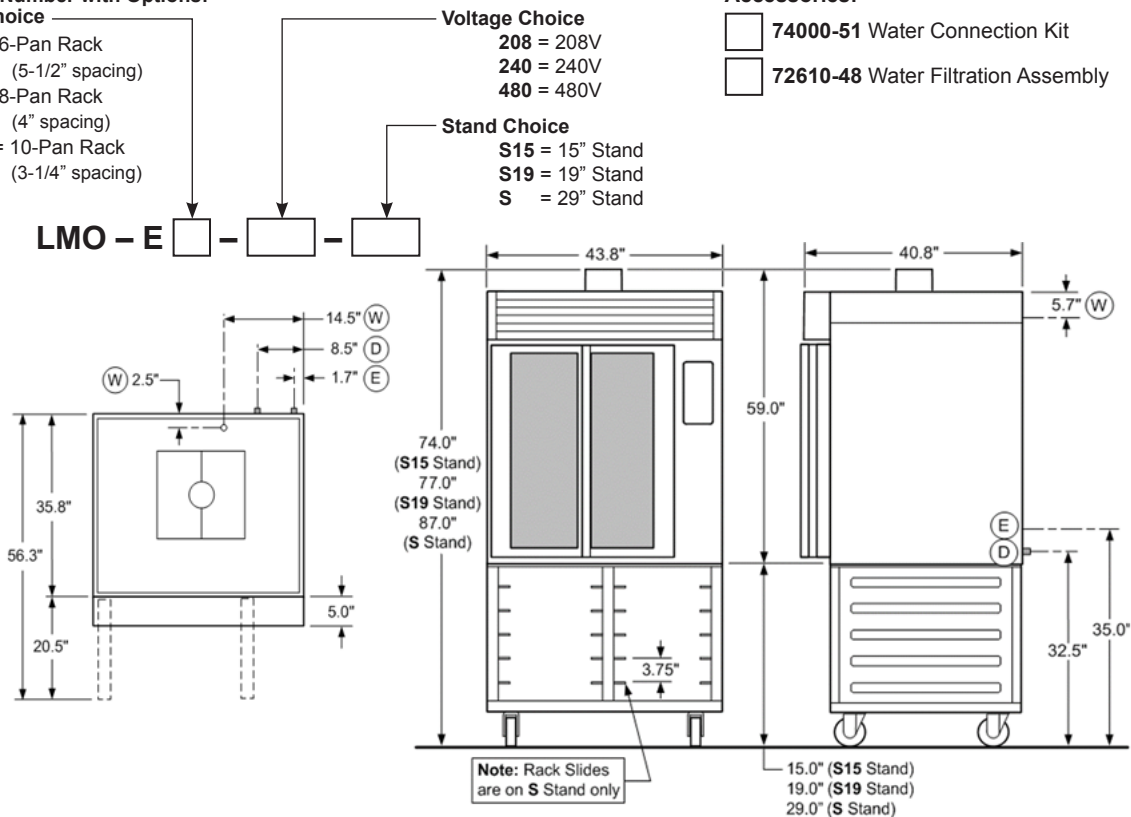
- 208 = 208V
- 240 = 240V
- 480 = 480V

Stand Choice

- S15 = 15" Stand
- S19 = 19" Stand
- S = 29" Stand

Accessories:

- 74000-51 Water Connection Kit
- 72610-48 Water Filtration Assembly



Minimum Water Quality Requirements:

Alkalinity < 22 ppm	Magnesium < 0.65 ppm
Aluminum < 17 ppm	pH = 8.5
Calcium < 3 ppm	Sodium < 8.5 ppm
Free Chlorine Radical < 0.6 ppm	Total Hardness < 11.9 ppm

Utility Requirements:

(E) Electrical		Amps			MCA	MOP	(W) Water	(D) Drain
		L1	L2	L3				
Control Circuit *	120VAC, 1ph, 60Hz, dedicated	7	N/A	N/A	20	20	1/2" NPT, cold, 3 gph @ 45psi	Route to air gap drain
208V Heater Circuit *	208VAC, 3ph, 60Hz	39	26	39	50	60		
240V Heater Circuit (option) *	240VAC, 3ph, 60Hz	30	30	30	40	60		
480V Heater Circuit (option) *	480VAC, 3ph, 60Hz	15	15	15	20	30		

* Oven Requires two electrical connections — one for Control Circuit and one for Heater Circuit

Shipping Information:

Appliance	Crate L x W x H	Ship Weight	Freight Class
Oven	50"L x 45"W x 65"H	1,165 lbs	110
S15 Stand	35.5"L x 44"W x 15.5"H	95 lbs	
S19 Stand	35.5"L x 44"W x 19.5"H	95 lbs	
S Stand	35.5"L x 44"W x 29"H	125 lbs	